

2020

2020 6 1 -6 21

2020

4

25

8

7

6

4

5

1

4

100

$$0.8 = 0.6 = 0.3$$

$$=0$$

$$= \sum_{i=1}^s M_i S_i \quad i=1 \quad i=2$$

$i=3$ $i=4$ $i=5$ M_i

i M_1

S_i i S_1

1-8

90%

80%-90%

80%

70%-80%

60%-70%

60%

2020

6962

5465

1

3365

61.57%

2100

38.43%

78.50%

2020

1

			%
1		679	12.42%
2		647	11.84%
3		323	5.91%
4		312	5.71%
5		714	13.06%
6		419	7.67%
7		457	8.36%
8		445	8.14%
9		374	6.84%
10		83	1.52%
11		150	2.74%
12		93	1.70%
13		75	1.37%
14		75	1.37%
15		136	2.49%
16		154	2.82%
17		253	4.63%
18		76	1.39%

=5465

42.08% 39.16% 17.04%

1.47% 0.25% 98.28%

83.66% 2

80%

85.71% 83.79% 83.66% 81.77%

1 2

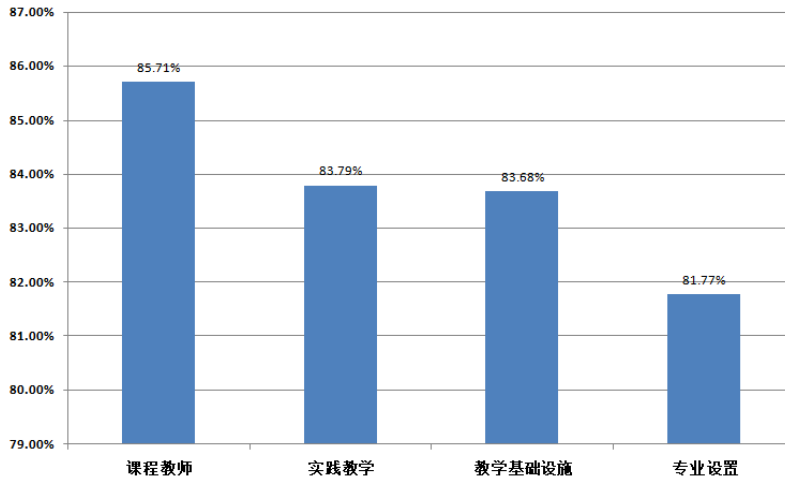
97%

2

		%			%
		98.76%	3.35	4.00	83.80%
		98.30%	3.32	4.00	82.89%
		97.00%	3.24	4.00	81.01%
		96.32%	3.22	4.00	80.52%
		97.61%	3.26	4.00	81.53%
		97.51%	3.25	4.00	81.30%
		97.53%	3.26	4.00	81.39%
		97.49%	3.27	4.00	81.70%
		97.57%	26.17	32.00	81.77%
		99.38%	3.49	4.00	87.29%
		99.12%	3.46	4.00	86.40%
		99.32%	3.46	4.00	86.39%
		98.63%	3.36	4.00	84.06%

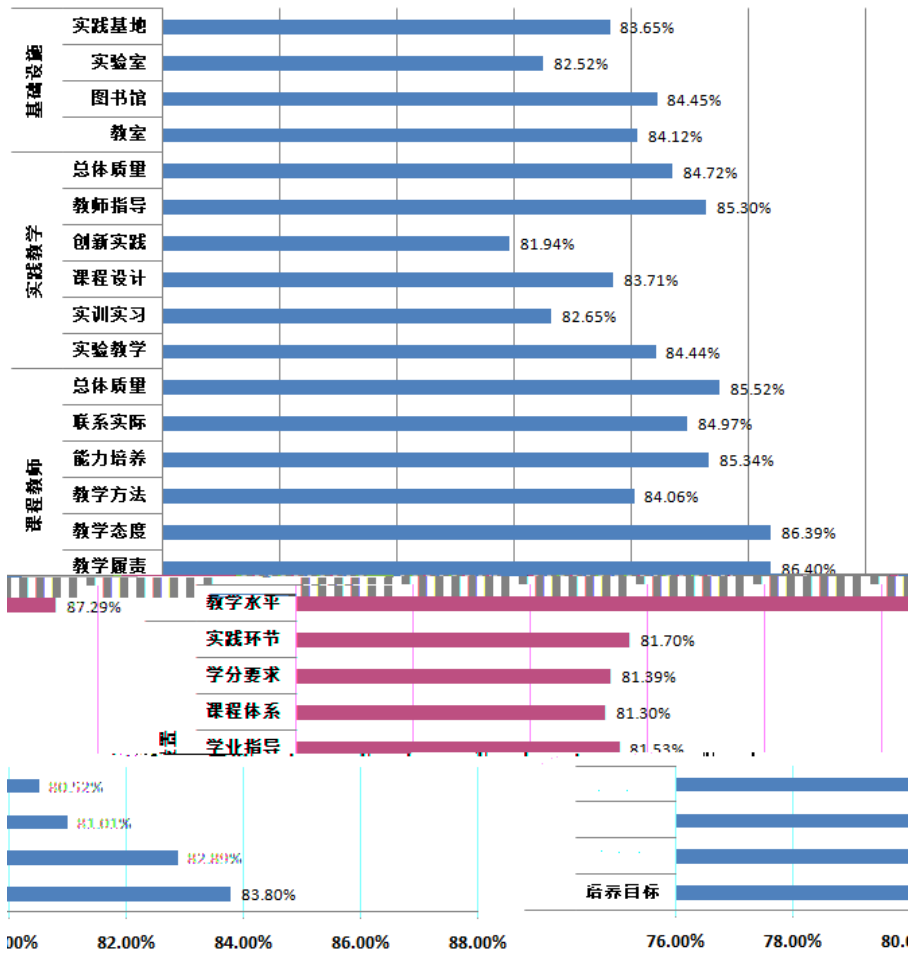
		%			%
		99.02%	3.41	4.00	85.34%
		98.83%	3.40	4.00	84.97%
		99.26%	3.42	4.00	85.52%
		99.08%	24.00	28.00	85.71%
		98.50%	3.38	4.00	84.44%
		97.38%	3.31	4.00	82.65%
		98.31%	3.35	4.00	83.71%
		97.78%	3.28	4.00	81.94%
		99.06%	3.41	4.00	85.30%
		99.10%	3.39	4.00	84.72%
		98.36%	20.11	24.00	83.79%
		98.48%	3.36	4.00	84.12%
		98.31%	3.38	4.00	84.45%
		97.55%	3.30	4.00	82.52%
		98.04%	3.35	4.00	83.65%
		98.10%	13.39	16.00	83.68%
		98.27%	83.66	100.00	83.66%

相对满意度 (%)



1

相对满意度 (%)



2

1

97.57%

81.77% 8

96%

80%

3

3

3

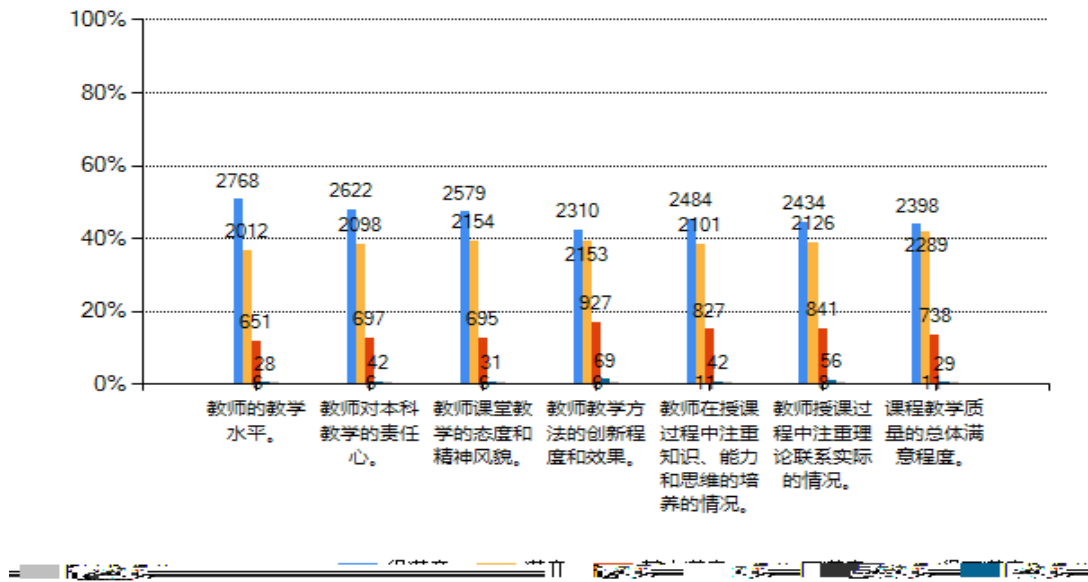
			%		%		%		%		%
1		2257	41.30%	2170	39.71%	970	17.75%	59	1.08%	9	0.16%
2		2169	39.69%	2165	39.62%	1038	18.99%	83	1.52%	10	0.18%
3		2041	37.35%	2093	38.30%	1167	21.35%	151	2.76%	13	0.24%
4		2061	37.71%	2020	36.96%	1183	21.65%	182	3.33%	19	0.35%
5		2047	37.46%	2140	39.16%	1147	20.99%	111	2.03%	20	0.37%
4		2004	36.67%	2174	39.78%	1151	21.06%	121	2.21%	15	0.27%
7		2003	36.65%	2199	40.24%	1128	20.64%	118	2.16%	17	0.31%
8		2044	37.40%	2210	40.44%	1074	19.65%	118	2.16%	19	0.35%

3

2

4

			%		%		%		%		%
1		2768	50.65%	2012	36.82%	651	11.91%	28	0.51%	6	0.11%
2		2622	47.98%	2098	38.39%	697	12.75%	42	0.77%	6	0.11%
3		2579	47.19%	2154	39.41%	695	12.72%	31	0.57%	6	0.11%
4		2310	42.27%	2153	39.40%	927	16.96%	69	1.26%	6	0.11%
5		2484	45.45%	2101	38.44%	827	15.13%	42	0.77%	11	0.20%
4		2434	44.54%	2126	38.90%	841	15.39%	56	1.02%	8	0.15%
7		2398	43.88%	2289	41.88%	738	13.50%	29	0.53%	11	0.20%



4

3

98.36%

83.79% 6

97%

81%

5

5

5



5

4

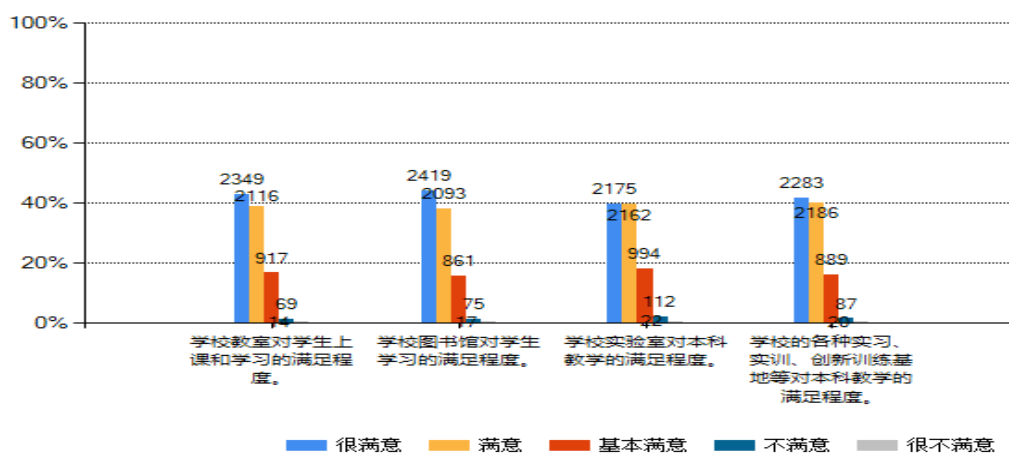
98.27%

83.66% 4

97%

82

2		2419	44.26%	2093	38.30%	861	15.75%	75	1.37%	17	0.31%
3		2175	39.80%	2162	39.56%	994	18.19%	112	2.05%	22	0.40%
4		2283	41.77%	2186	40.0%	889	16.27%	87	1.59%	20	0.37%



6

80%

83.66%

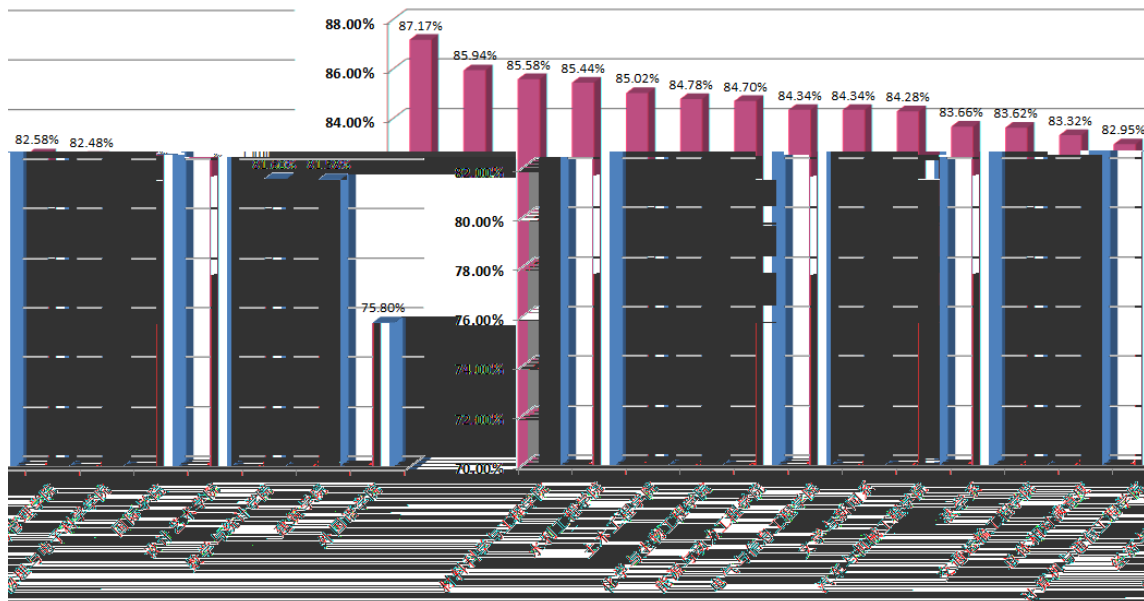
7 7

7

			%
1		679	84.28%
2		647	85.58%
3		323	84.34%
4		312	85.94%

5		714	84.78%
6		419	85.02%
7		457	83.32%
8		445	83.62%
9		374	85.44%
10		83	81.60%
11		150	82.95%
12		93	84.70%
13		75	81.58%
14		75	84.70%
15		136	84.34%
16		154	75.80%
17		253	82.48%
18		76	82.58%
19		5465	83.66%

相对满意度 (%)





1.

2.

3.

4.

+

5.

1.

2.

3.

4.

5.

6.

7.

2020 7 6

1

2020

1.

2.

3.

1-

2-

3-

4-

5-

1.

2.

3.

4.

5.

6.

7.

8.

1-

2-

3-

4-

5-

1.

2.

3.

4.

5.

6.

7.

1-

2-

3-

4-

5-

1.

2.

3.

4.

5.

6.

1-

2-

3-

4-

1.

2.